

EXCEL-2000 전기도면

도어 인버터사용



구일엔지니어링

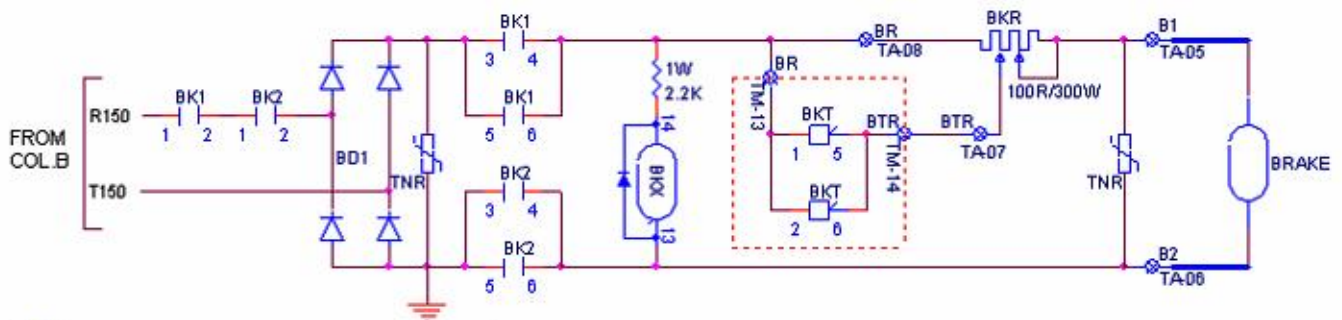
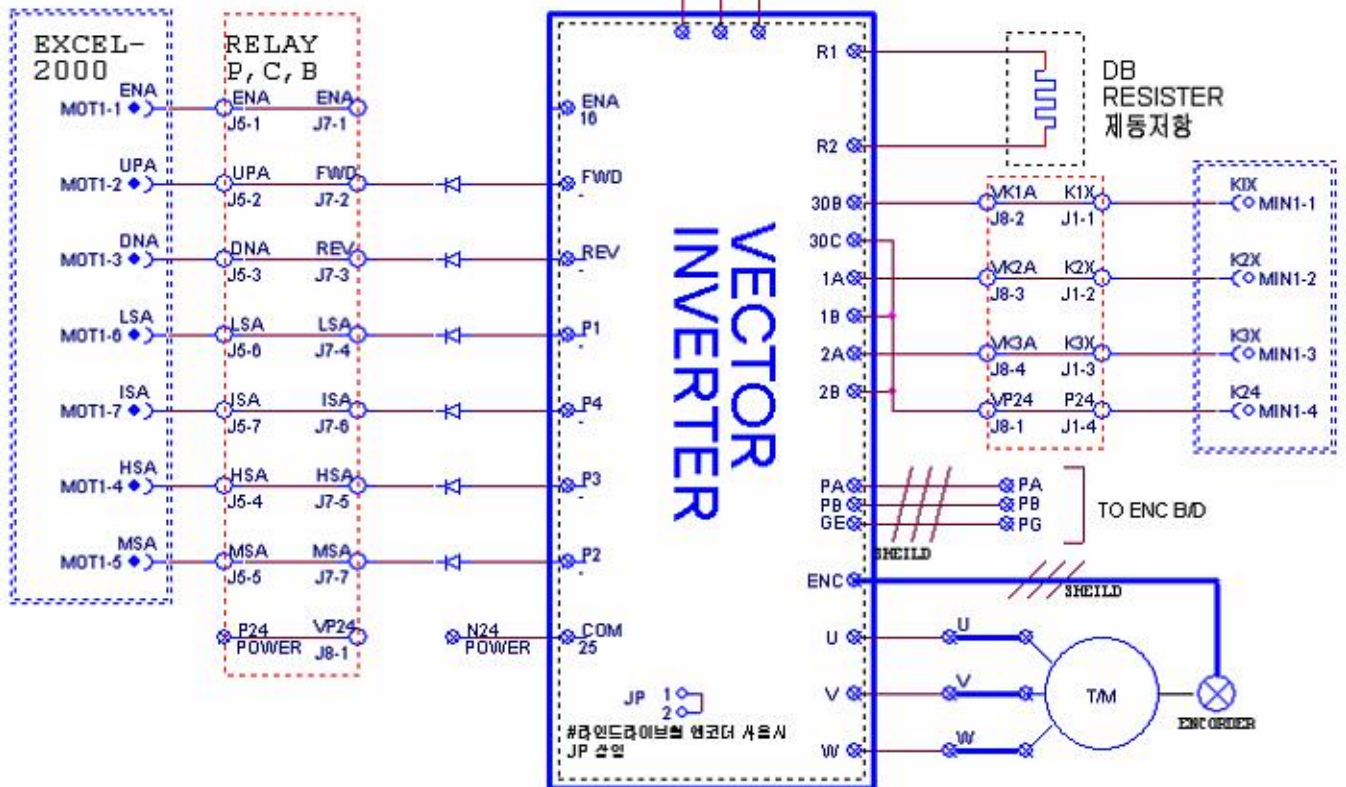
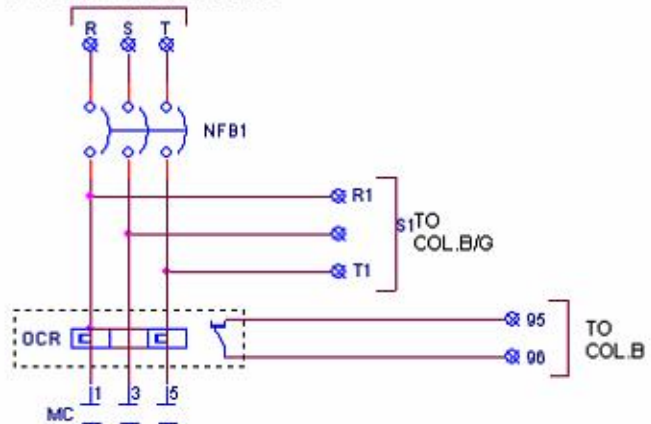
경기도 군포시 산본동 49-15 (4층)

TEL : 031) 391-9166 (代) FAX : 031) 391-9106

SPEED	CLOSE TO No.15(COM) IN VECTOR INVERTER INPUT TERMINAL	PROG NO	PROG DATA
90M/M현장 HIGH	FWD/REV, P3	FUN-17	1750(90M)
60M/M현장 HIGH	FWD/REV, P2	FUN-15	1740(60M) 1350(90M)
LEVEL SPEED	FWD/REV, P1	FUN-13	70
HAND SPEED	FWD/REV, P4	FUN-20	300

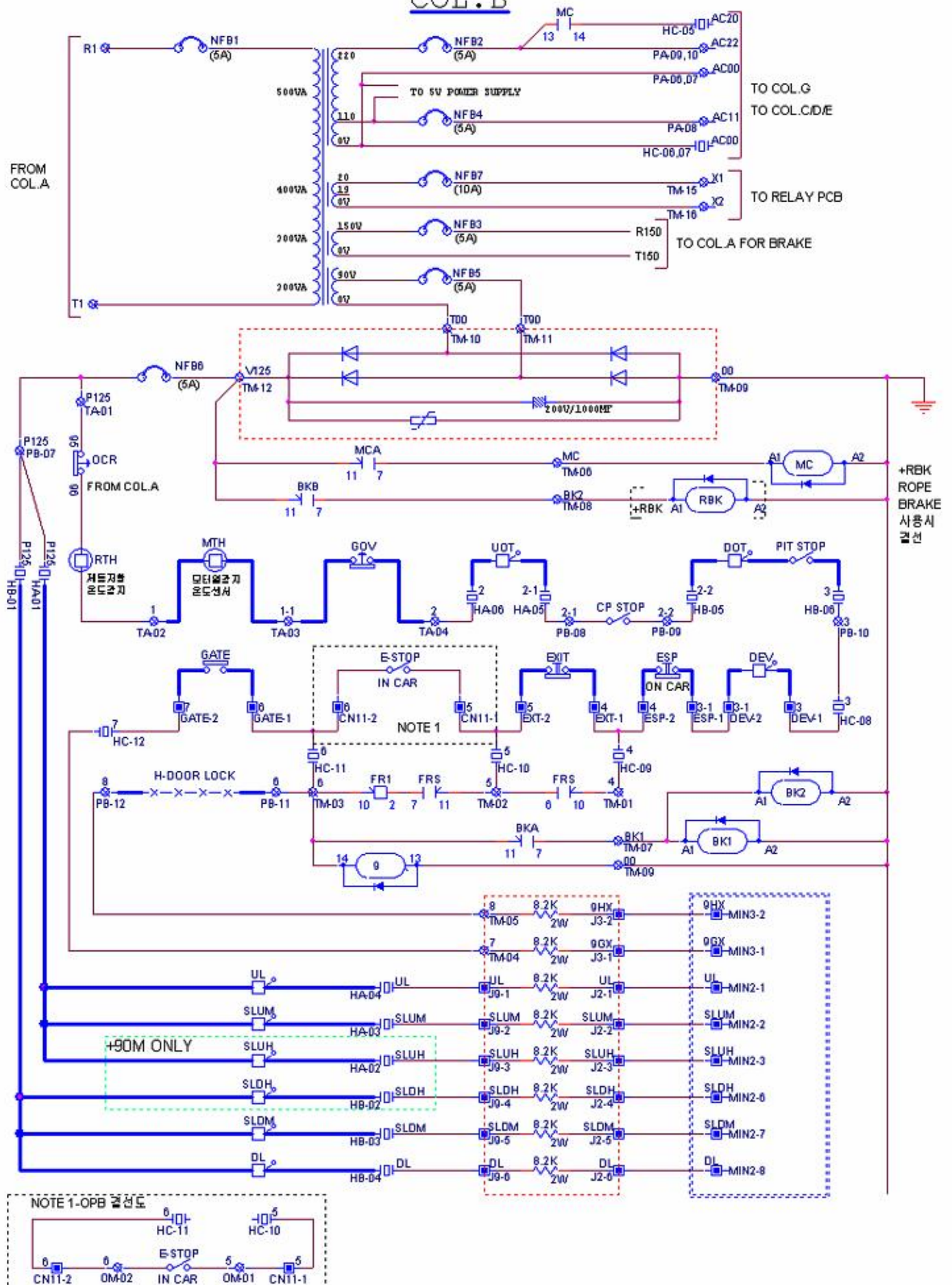
COL.A

FROM B/D POWER

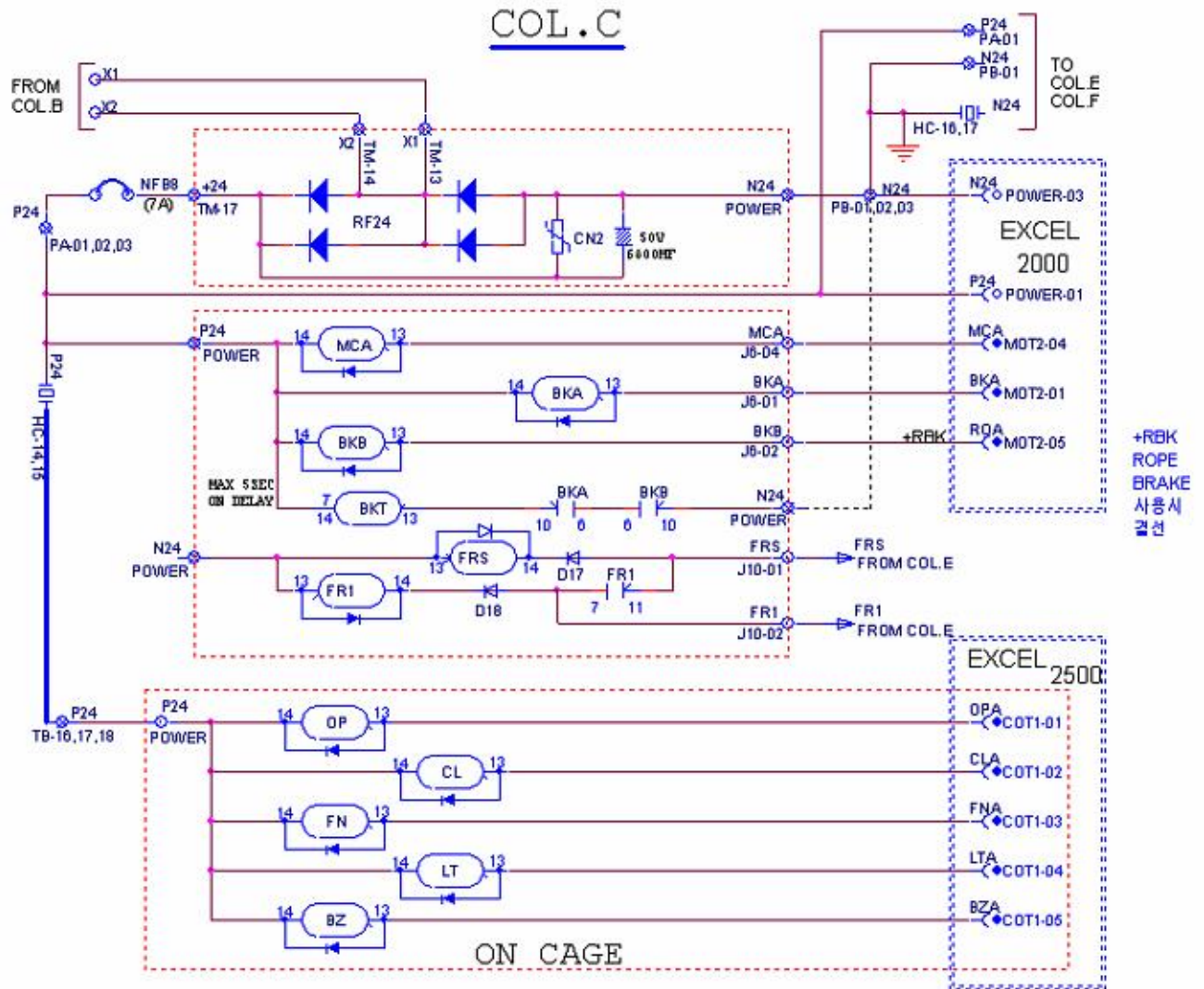


TA01/15 = 기계실 CP 10P 단자
TM-01/20 = 기계실 CP RELAY PCB 20P(SWING PANEL)

Size	Document Number EXCEL-2012VF	Rev 99-4
Date:	Saturday, July 05, 2008	Sheet 1 of 7

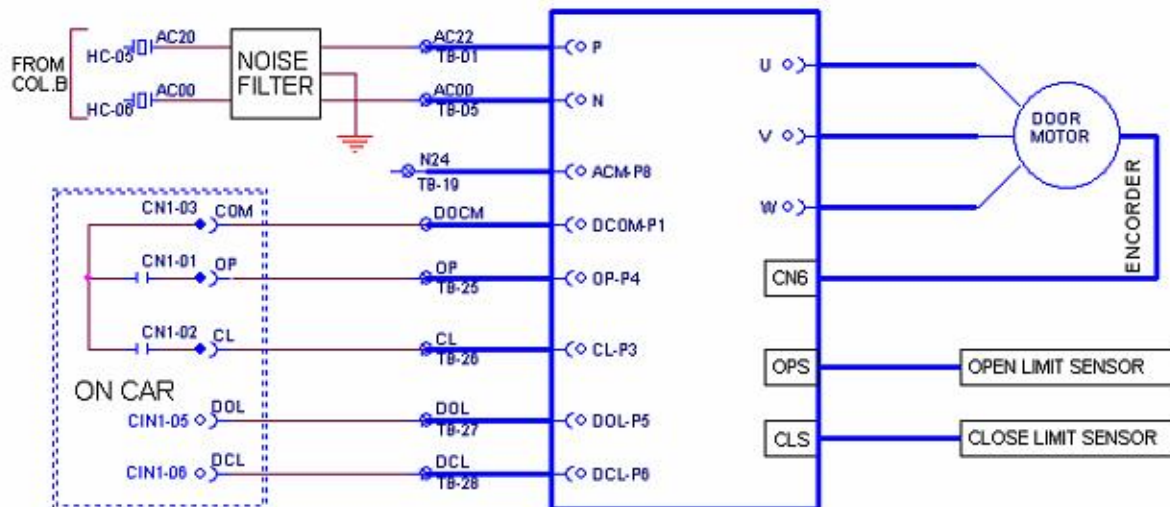


COL.C

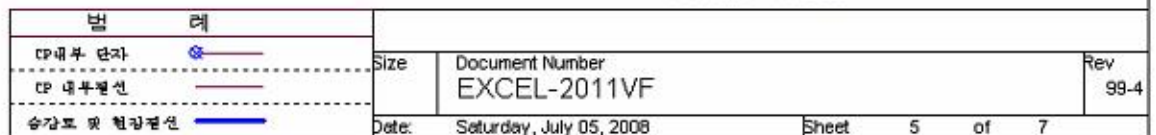


DOOR CONTROL B/D

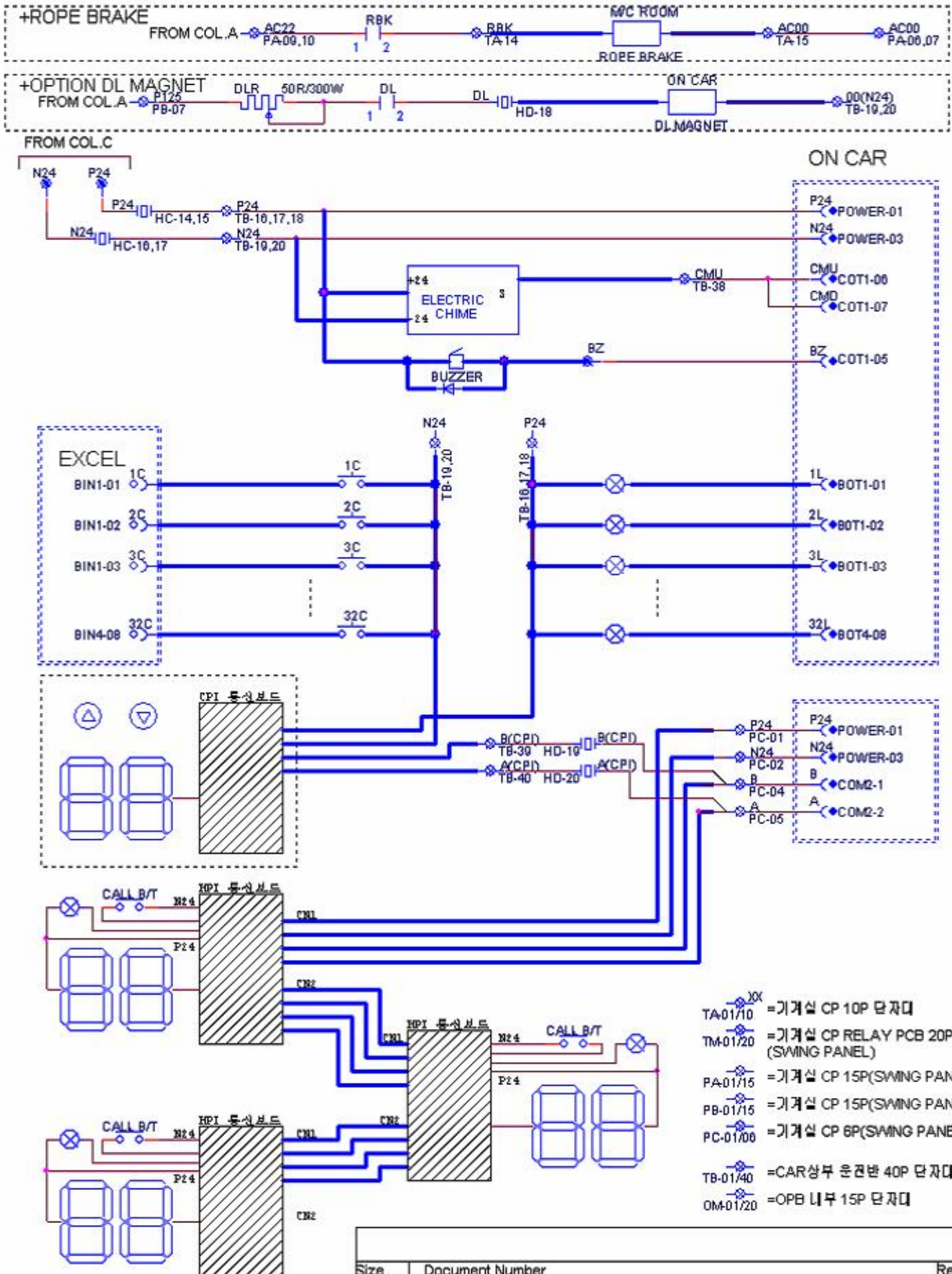
엘레코리아 도어콘트롤 사용시 결선도



•RBK= ROPE BRAKE 사용시결선
(미사용시 BKX와 결선)
•BKS=BRAKE기방 확인 S/W가 있는
M/C에 사용



COL.F



COL.G

AC220V시용시-AC22

FROM COL.B

AC22

PA00.10

AC22

HB-10

AC22

HC-01.02

AC22

TB-01

AC22

FX

HP-05

FX

CN11-05

LX

HP-03

LX

CN11-03

LX

CN11-03

LX

CN11-03

LX

CN11-03

LX

CN11-03

LX

CN11-03

LX

CN11-03

LX

CN11-03

LX

CN11-03

LX

CN11-03

LX

CN11-03

LX

CN11-03

LX

CN11-03

LX

CN11-03

LX

CN11-03

LX

CN11-03

LX

CN11-03

LX

CN11-03

LX

CN11-03

LX

CN11-03

LX

CN11-03

LX

CN11-03

LX

CN11-03

LX

CN11-03

LX

CN11-03

LX

CN11-03

LX

CN11-03

LX

CN11-03

LX

CN11-03

LX

CN11-03

LX

CN11-03

LX

CN11-03

LX

CN11-03

LX

CN11-03

LX

CN11-03

LX

CN11-03

TOP CAR

FXC

CN2-01

LXC

CN3-01

FXC

CN2-02

LXC

CN3-02

FXC

CN2-01

LXC

CN3-01

FXC

CN2-02

LXC

CN3-02

FXC

CN2-01

LXC

CN3-01

FXC

CN2-02

LXC

CN3-02

FXC

CN2-01

LXC

CN3-01

FXC

CN2-02

LXC

CN3-02

FXC

CN2-01

LXC

CN3-01

FXC

CN2-02

LXC

CN3-02

FXC

CN2-01

LXC

CN3-01

FXC

CN2-02

LXC

CN3-02

FXC

CN2-01

LXC

CN3-01

FXC

CN2-02

LXC

CN3-02

FXC

CN2-01

LXC

CN3-01

FXC

CN2-02

LXC

CN3-02

FXC

CN2-01

LXC

CN3-01

FXC

CN2-02

LXC

CN3-02

FXC

CN2-01

LXC

CN3-01

EM POWER V

IL

IN

-V

EM LIGHT

IN CAR LIGHT

FAN

CONCENT

MAX 1A

EM LIGHT

IN CAR LIGHT

FAN

CONCENT

MAX 1A

EM LIGHT

IN CAR LIGHT

FAN

CONCENT

MAX 1A

EM LIGHT

IN CAR LIGHT

FAN

CONCENT

MAX 1A

EM LIGHT

IN CAR LIGHT

FAN

CONCENT

MAX 1A

EM LIGHT

IN CAR LIGHT

FAN

CONCENT

MAX 1A

EM LIGHT

IN CAR LIGHT

FAN

CONCENT

MAX 1A

EM LIGHT

IN CAR LIGHT

FAN

CONCENT

MAX 1A

EM LIGHT

IN CAR LIGHT

FAN

CONCENT

MAX 1A

EM LIGHT

IN CAR LIGHT

FAN

CONCENT

MAX 1A

EM LIGHT

IN CAR LIGHT

FAN

CONCENT

MAX 1A

EM LIGHT

IN CAR LIGHT

FAN

CONCENT

MAX 1A

EM LIGHT

IN CAR LIGHT

FAN

CONCENT

MAX 1A

EM LIGHT

IN CAR LIGHT

FAN

CONCENT

MAX 1A

FROM COL.B

AC00

PA00.07

AC00

HC07.08

AC00

TB-00.07

AC00

AC00

AC00

AC00

AC00

AC00

AC00

AC00

AC00

AC00

AC00

AC00

AC00

AC00

AC00

AC00

AC00

AC00

AC00

AC00

AC00

AC00

AC00

AC00

AC00

AC00

AC00

AC00

AC00

AC00

AC00

AC00

AC00

AC00

AC00

AC00

AC00

AC00

AC00

AC00

AC00

AC00

AC00

AC00

AC00

AC00

AC00

AC00

AC00

AC00

AC00

AC00

AC00

AC00

AC00

AC00

AC00

AC00

AC00

AC00

AC00

AC00

AC00

CP및 승강로 현장결선도

CONTROL PANEL

리미트 스위치 간격		
NO	60MMIN	90MMIN
A	30MM	30MM
B	200MM	200MM
C	1400MM	1200MM
D	NOT USE	1800MM
E	30MM	30MM
F	200MM	200MM
G	1400MM	1200MM
H	NOT USE	1800MM

상부리미트		
NO	SIGNAL	
HA-01	P125	
HA-02	SLUH	
HA-03	SLUM	
HA-04	UL	
HA-05	2-1	
HA-06	2	
HA-07	EARTH	
HA-08		
HA-09		

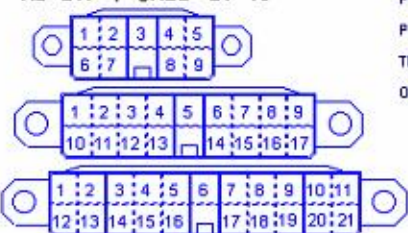
하부리미트		
NO	SIGNAL	
HB-01	P125	
HB-02	SLDH	
HB-03	SLDM	
HB-04	DL	
HB-05	2-2	
HB-06	3	
HB-07	PK	
HB-08	FRS	
HB-09	P24	
HB-10	AC22	
HB-11	AC00	
HB-12	TE1	
HB-13	TE2	
HB-14	TE3	
HB-15	TE4	
HB-16	EARTH	
HB-17		

HC-21P		
NO	SIGNAL	No
T-01	AC22	01
T-02	AC22	02
T-03	AC11	03
T-04	AC11	04
T-05	AC20	05
T-06	AC00	06
T-07	AC00	07
T-08	AC00	08
T-09	3	09
T-10	4	10
T-11	5	11
T-12	6	12
T-13	7	13
T-14	P24	14
T-15	P24	15
T-16	N24	16
T-17	N24	17
T-18	LU	18
T-19	LUZ	19
T-20	LDZ	20
T-21		21

HD-21P		
NO	SIGNAL	No
I-21	LD	01
I-22	YE1	02
I-23	TE2	03
I-24	TE3	04
I-25	TE4	05
I-26	GND	06
I-27	RX	07
I-28	/RX	08
I-29	TX	09
I-30	/TX	10
I-31		11
I-32		12
I-33	GND	13
I-34	SPK1	14
I-35	SPK2	15
I-36	FR1	16
I-37	FR2	17
I-38	DL	18
I-39	R(CPF)	19
I-40	AC(CPF)	20
I-41		21

주의!! 상부 및 하부리미트용 하네스 HA,HB는 승강로 스위치 결선완료 후 CP 하네스 쪽 에 꽂을것.

HA-9P=상부리미트용
HB-17P=하부리미트용
HC-21P=T-CABLE 1-20
HD-21P=T-CABLE 21-40



(핀번호고정용 하네스를 밖에서 바라볼 때의 핀 번호임)

- TA01/10 = 기계실 CP 10P 단자
- TM01/20 = 기계실 CP RELAY PCB 20P(SWING PANEL)
- PA01/15 = 기계실 CP 15P(SWING PANEL)
- PB-01/15 = 기계실 CP 15P(SWING PANEL)
- PC-01/06 = 기계실 CP 6P(SWING PANEL)
- TB-01/40 = CAR상부 운전반 40P 단자
- OM01/20 = OPB 내부 15P 단자

케이블 사양

- HA (상부리미트용 8Cx0.75SQ-10M)
- HB (하부리미트용 20Cx0.75SQ)
- HC= T-CABLE 1-20, HD= T-CABLE 21-40
- HP (캐상부-운전반용 12Cx0.55SQ-4.5M)
- HQ (캐상부-운전반용 10Cx0.55SQ-4.5M)
- 4C 통신케이블(CP-최상층용-10M,기타층용-6M,CPI층-4M)

각층 HP/HIB DIP SW 조정표

DIP SW	ON	OFF
1F		
2F		
3F		
4F		
5F		
6F		
7F		
8F		
9F		
10F		
11F		
12F		
13F		
14F		
15F		
16F		
17F		
18F		
19F		
20F		
21F		
22F		
23F		
24F		
25F		
26F		
27F		
28F		
29F		
30F		
31F		
32F		

